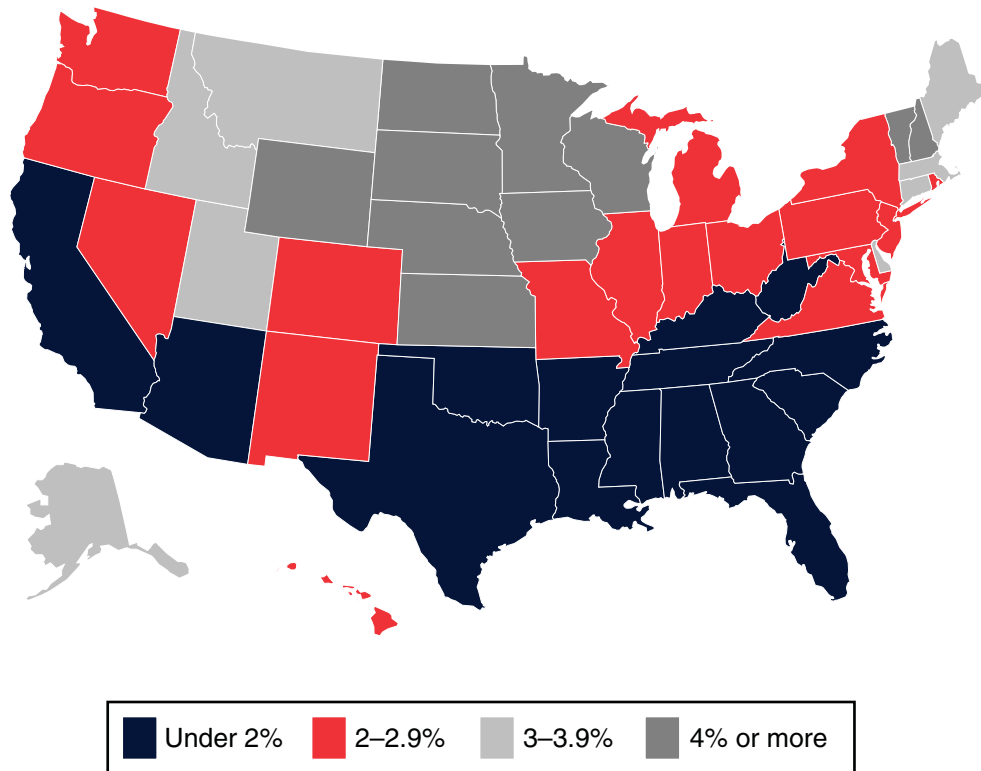


Chart 6.
Percentage distribution, by state, December 2004

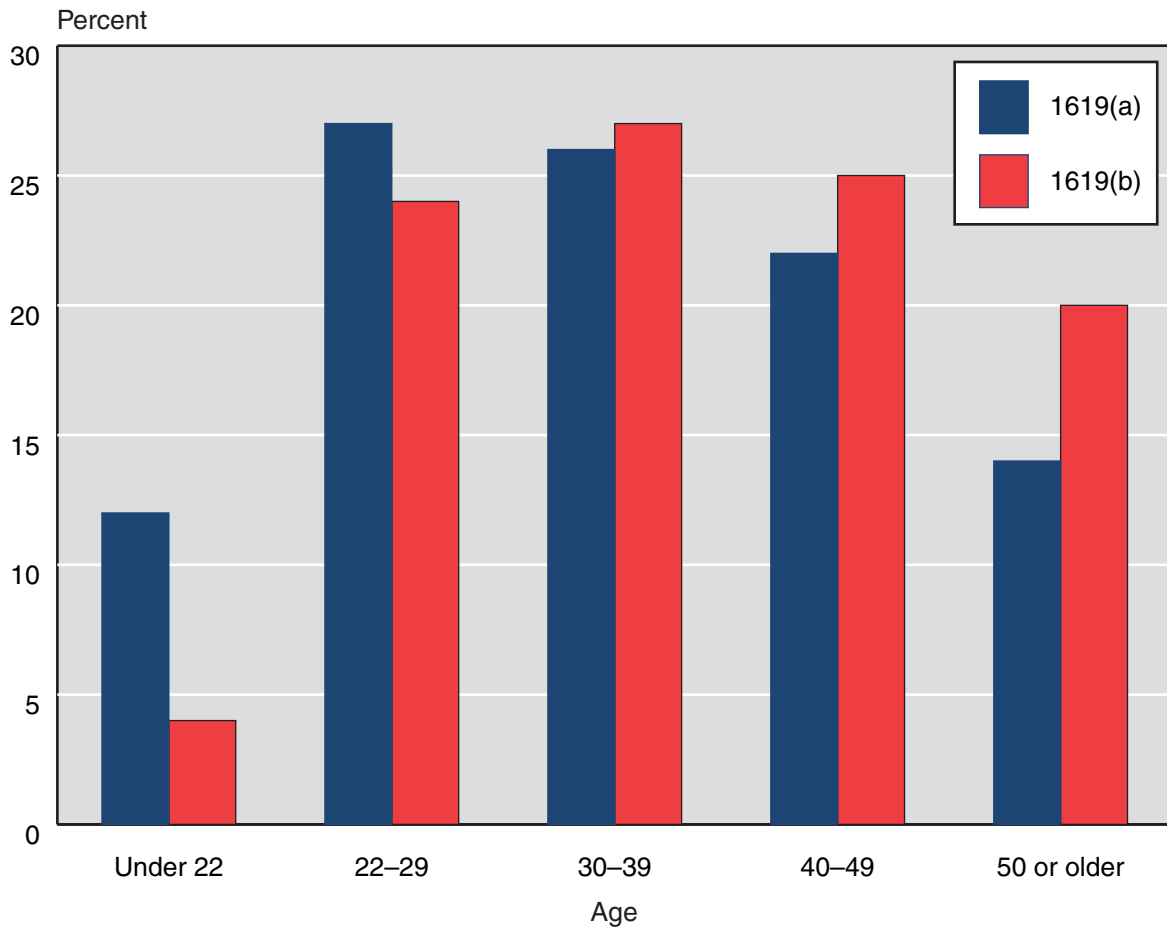
The state distribution of section 1619 cases mirrors that for all working recipients in Chart 2. Proportions of section 1619 cases were higher in the Midwest and lower in the South.



SOURCE: Table 9.

Chart 7.
Percentage distribution, by age, December 2004

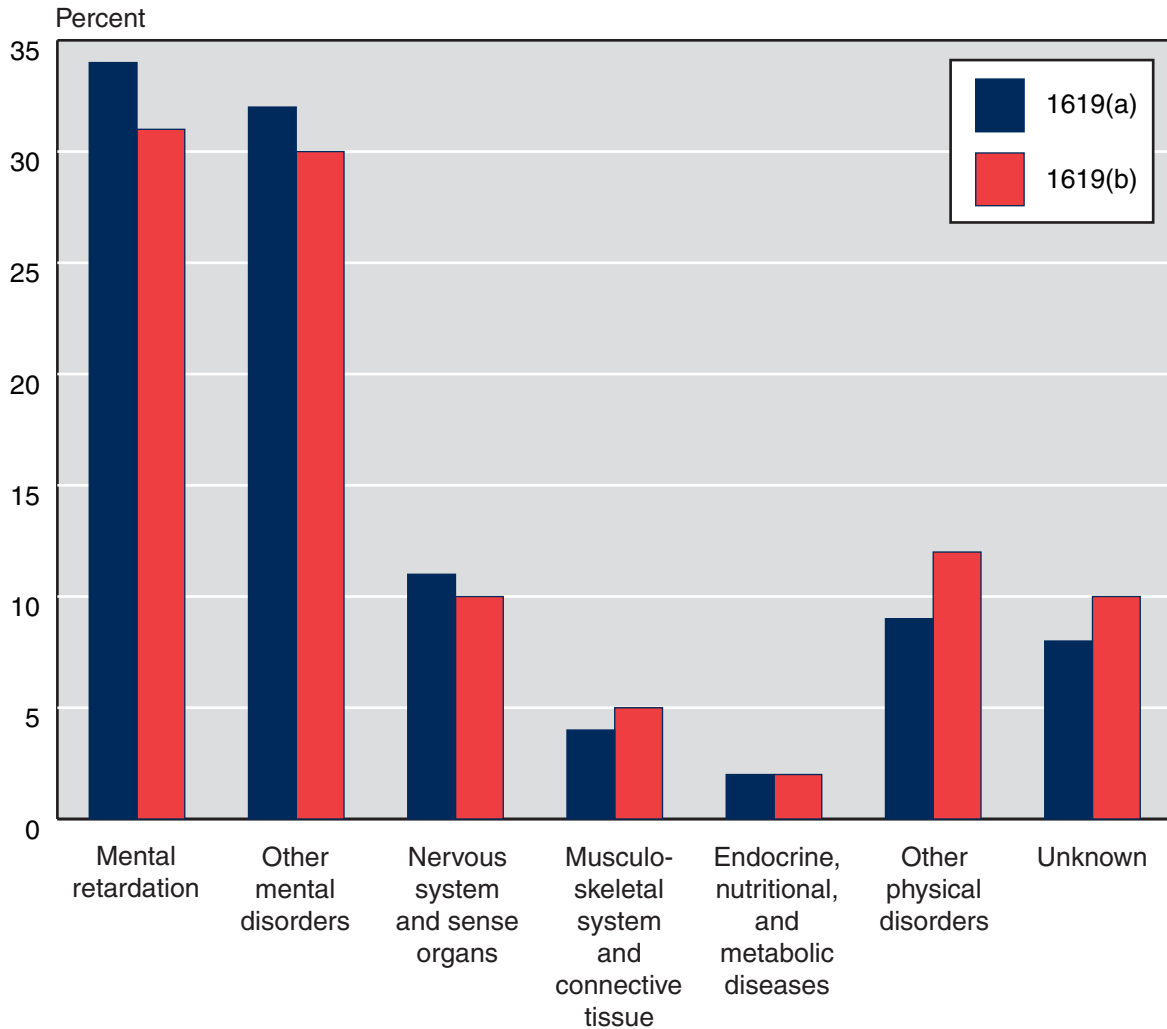
Recipients who benefit from section 1619(a) are younger than those who benefit from 1619(b).



SOURCE: Table 12.

Chart 8.
Percentage distribution, by diagnostic group, December 2004

As with all working recipients, the majority of the section 1619 participants were diagnosed with a mental disorder. Two-thirds of participants under section 1619(a) and three-fifths of participants under section 1619(b) had either mental retardation or other mental disorders.



SOURCE: Table 13.

Table 8.
Number and percentage change from prior period, selected months 1982–2004

Month	Section 1619(a) participants		Section 1619(b) participants ^a	
	Number	Percentage change from prior period	Number	Percentage change from prior period
December				
1982	287	...	5,515	...
1983	392	36.6	5,165	-6.3
1984	--	--	--	--
1985	--	--	--	--
1986	--	--	--	--
1987	14,559	...	15,632	...
1988	19,920	36.8	15,625	0
1989	25,655	28.8	18,254	16.8
1990	13,994	-45.5	23,517	28.8
1991	15,531	11.0	27,264	15.9
1992	17,603	13.3	31,649	16.1
1993	20,028	13.8	35,299	11.5
1994	24,315	21.4	40,683	15.3
1995	28,060	15.4	47,002	15.5
1996	31,085	10.8	51,905	10.4
1997	34,673	11.5	57,089	10.0
1998	37,271	7.5	59,542	4.3
1999	25,528	-31.5	69,265	16.3
2000	27,542	7.9	83,572	20.7
2001	22,100	-19.8	76,455	-8.5
2002	17,271	-21.9	82,177	7.5
2003	17,130	-0.8	71,097	-13.5
2004	17,115	-0.1	73,681	3.6
2002				
March	21,417	-3.1	72,595	-5.0
June	20,922	-2.3	77,349	6.5
September	20,275	-3.1	82,373	6.5
December	17,271	-14.8	82,177	-0.2
2003				
March	16,771	-2.9	74,558	-9.3
June	16,539	-1.4	72,016	-3.4
September	16,562	0.1	73,576	2.2
December	17,130	3.4	71,097	-3.4
2004				
March	16,879	-1.5	69,532	-2.2
June	16,587	-1.7	72,898	4.8
September	16,891	1.8	75,657	3.8
December	17,115	1.3	73,681	-2.6

SOURCE: Social Security Administration, Supplemental Security Record (Characteristic Extract Record format), 100 percent data.

NOTES: When the substantial gainful activity (SGA) level is periodically raised, SSI recipients with earnings below the increased SGA level become eligible for regular SSI benefits rather than the special cash payments under section 1619(a). This can lead to decreases in the number of 1619(a) participants.

... = not applicable; -- = not available.

a. Includes blind participants. Of the 73,681 participants in December 2004, 1,178 were blind.

CONTACT: Clark Pickett (410) 965-9016 or ssi.workers@ssa.gov.

Table 9.
Ranking of state or other area, by section 1619 participants as a percentage of all blind and disabled recipients in state aged 18–64, December 2004

State or area	Ranking	All blind and disabled recipients ^a	Section 1619 participants	
			Number	Percent
All areas		4,088,303	88,077	2.15
North Dakota	1	5,450	352	6.46
South Dakota	2	7,938	503	6.34
Wyoming	3	4,158	241	5.80
Iowa	4	30,377	1,582	5.21
Minnesota	5	46,892	2,358	5.03
Vermont	6	9,196	426	4.63
Wisconsin	7	60,431	2,639	4.37
Nebraska	8	15,433	648	4.20
Kansas	9	26,024	1,043	4.01
New Hampshire	10	9,833	393	4.00
Montana	11	10,595	420	3.96
Idaho	12	14,653	552	3.77
Utah	13	14,456	536	3.71
Connecticut	14	33,782	1,177	3.48
Delaware	15	8,189	284	3.47
Massachusetts	16	107,148	3,424	3.20
Maine	17	23,537	748	3.18
Alaska	18	6,860	209	3.05
Washington	19	74,331	2,084	2.80
Maryland	20	54,993	1,517	2.76
Colorado	21	34,773	953	2.74
Oregon	22	39,370	1,048	2.66
Indiana	23	65,266	1,655	2.54
New Jersey	24	80,358	2,010	2.50
Nevada	25	18,289	455	2.49
Missouri	26	78,643	1,925	2.45
Michigan	27	149,621	3,619	2.42
Rhode Island	28	18,906	440	2.33
Virginia	29	79,226	1,832	2.31
New York	30	340,928	7,655	2.25
District of Columbia	31	12,523	277	2.21
Illinois	32	157,798	3,466	2.20
Ohio	33	170,915	3,650	2.14
New Mexico	34	30,000	638	2.13
Pennsylvania	35	203,092	4,258	2.10
Hawaii	36	12,487	254	2.03
Arizona	37	56,199	1,107	1.97
Florida	38	200,953	3,826	1.90
Northern Mariana Islands	39	385	7	1.82
California	40	585,721	10,495	1.79
Louisiana	41	101,941	1,752	1.72
Arkansas	42	52,408	883	1.68
North Carolina	43	112,521	1,872	1.66
Oklahoma	44	49,330	797	1.62
Texas	45	241,756	3,849	1.59

(Continued)

Table 9.
Ranking of state or other area, by section 1619 participants as a percentage of all blind and disabled recipients in state aged 18–64, December 2004—Continued

State or area	Ranking	All blind and disabled recipients ^a	Section 1619 participants	
			Number	Percent
Georgia	46	117,699	1,831	1.56
South Carolina	47	62,345	960	1.54
Tennessee	48	102,986	1,374	1.33
Mississippi	49	72,009	949	1.32
West Virginia	50	55,821	644	1.15
Alabama	51	99,709	1,120	1.12
Kentucky	52	120,049	1,340	1.12

SOURCE: Social Security Administration, Supplemental Security Record (Characteristic Extract Record format), 100 percent data.

a. Includes section 1619(b) participants.

CONTACT: Clark Pickett (410) 965-9016 or ssi.workers@ssa.gov.

Table 10.
Section 1619(a) participants and their average earnings, by state or other area, selected months,
2003–2004

State or area	December 2003		September 2004		December 2004	
	Number	Average earnings (dollars)	Number	Average earnings (dollars)	Number	Average earnings (dollars)
All areas	17,130	1,059	16,891	1,060	17,115	1,076
Alabama	219	1,000	248	1,018	250	1,037
Alaska	29	1,076	29	1,013	32	1,133
Arizona	209	1,018	205	1,028	206	1,044
Arkansas	149	1,008	133	1,008	152	1,013
California	3,568	1,169	3,686	1,166	3,788	1,181
Colorado	143	1,000	161	1,015	163	1,044
Connecticut	166	1,001	159	1,041	144	1,042
Delaware	36	991	39	1,013	42	1,032
District of Columbia	57	1,053	56	1,014	60	1,040
Florida	690	1,024	720	1,016	697	1,030
Georgia	319	1,005	314	1,005	338	1,014
Hawaii	41	1,017	54	1,012	62	1,033
Idaho	69	1,024	89	1,052	91	1,062
Illinois	738	1,017	657	1,020	701	1,024
Indiana	244	1,006	212	1,031	253	1,040
Iowa	197	1,027	183	1,024	185	1,051
Kansas	142	1,046	135	1,043	152	1,068
Kentucky	210	1,018	249	1,023	238	1,031
Louisiana	375	1,008	323	1,014	335	1,032
Maine	100	1,060	99	1,078	96	1,080
Maryland	274	1,018	279	1,028	310	1,041
Massachusetts	618	1,054	569	1,055	582	1,082
Michigan	598	1,024	600	1,032	606	1,033
Minnesota	278	1,042	236	1,027	262	1,059
Mississippi	203	1,017	197	1,020	194	1,017
Missouri	263	1,005	263	1,029	257	1,043
Montana	50	986	49	1,013	49	1,034
Nebraska	98	1,027	71	1,055	79	1,045
Nevada	66	1,029	66	1,028	78	1,065
New Hampshire	50	1,016	51	1,036	63	1,057
New Jersey	327	1,035	332	1,026	321	1,037
New Mexico	105	1,004	105	1,021	100	1,024
New York	1,665	1,070	1,536	1,065	1,617	1,086
North Carolina	284	1,024	337	1,009	292	1,019
North Dakota	26	1,014	35	1,018	37	1,032
Ohio	722	1,028	676	1,018	677	1,041
Oklahoma	139	1,025	121	1,009	143	1,022
Oregon	123	1,040	144	1,028	125	1,038
Pennsylvania	914	1,033	852	1,040	775	1,041
Rhode Island	85	1,064	72	1,052	85	1,099
South Carolina	162	1,016	148	1,026	136	1,030
South Dakota	54	1,052	55	1,012	60	1,063
Tennessee	255	1,024	247	1,025	256	1,047
Texas	713	1,023	740	1,008	643	1,024
Utah	81	1,023	83	1,004	79	1,023

(Continued)

Table 10.
Section 1619(a) participants and their average earnings, by state or other area, selected months,
2003–2004—Continued

State or area	December 2003		September 2004		December 2004	
	Number	Average earnings (dollars)	Number	Average earnings (dollars)	Number	Average earnings (dollars)
Vermont	52	1,062	58	1,064	62	1,097
Virginia	315	1,029	307	1,013	321	1,043
Washington	407	1,039	425	1,035	421	1,056
West Virginia	124	1,033	134	1,034	127	1,039
Wisconsin	349	1,026	327	1,035	341	1,050
Wyoming	29	1,021	25	997	29	1,034
Outlying area						
Northern Mariana Islands	a	a	a	a	3	945

SOURCE: Social Security Administration, Supplemental Security Record (Characteristic Extract Record format), 100 percent data.

a. Data are not shown to avoid disclosure of information for particular individuals.

CONTACT: Clark Pickett (410) 965-9016 or ssi.workers@ssa.gov.

Table 11.
Section 1619(b) participants and their average earnings, by state or other area, selected months,
2003–2004

State or area	December 2003		September 2004		December 2004	
	Number	Average earnings (dollars)	Number	Average earnings (dollars)	Number	Average earnings (dollars)
All areas	71,097	1,081	75,657	1,097	73,681	1,070
Alabama	902	1,204	956	1,180	903	1,110
Alaska ^a	154	1,175	193	1,163	178	1,183
Arizona	879	1,165	960	1,165	944	1,104
Arkansas	739	1,027	764	1,058	778	1,004
California	6,497	1,390	7,225	1,420	7,216	1,399
Colorado	807	1,074	857	1,080	809	1,021
Connecticut ^a	1,058	954	1,057	992	1,056	979
Delaware	242	1,159	266	1,189	246	1,123
District of Columbia	219	1,432	241	1,444	239	1,441
Florida	3,174	1,099	3,403	1,134	3,248	1,094
Georgia	1,454	1,070	1,629	1,089	1,558	1,055
Hawaii ^a	150	1,065	190	1,134	203	1,148
Idaho ^a	423	987	480	951	470	957
Illinois ^a	2,711	1,051	2,852	1,075	2,875	1,078
Indiana ^a	1,427	957	1,495	985	1,434	944
Iowa	1,487	794	1,541	834	1,419	819
Kansas ^a	935	927	940	928	930	867
Kentucky	1,125	1,106	1,128	1,104	1,141	1,069
Louisiana	1,424	1,040	1,512	1,031	1,464	1,001
Maine	643	988	677	990	662	988
Maryland	1,219	1,164	1,318	1,176	1,241	1,131
Massachusetts	2,876	1,171	3,026	1,206	2,979	1,200
Michigan	3,143	1,028	3,233	1,027	3,124	989
Minnesota ^a	2,044	914	2,203	885	2,150	863
Mississippi	783	1,138	838	1,184	785	1,123
Missouri ^a	1,709	914	1,754	902	1,717	879
Montana	373	846	406	865	383	876
Nebraska ^a	587	885	595	942	579	933
Nevada ^a	302	1,172	398	1,212	392	1,211
New Hampshire ^a	330	911	352	967	339	985
New Jersey	1,694	1,230	1,795	1,189	1,752	1,166
New Mexico	586	1,084	578	1,080	568	1,080
New York	5,979	1,270	6,336	1,250	6,242	1,221
North Carolina	1,576	1,010	1,677	1,021	1,629	1,009
North Dakota ^a	286	797	322	805	319	815
Ohio ^a	3,058	960	3,217	970	3,072	950
Oklahoma ^a	566	853	687	855	676	840
Oregon ^a	919	855	971	909	945	900
Pennsylvania	3,623	1,044	3,940	1,071	3,587	1,025
Rhode Island	368	1,064	388	1,127	367	1,105
South Carolina	831	994	877	991	858	945
South Dakota	472	827	466	839	458	776
Tennessee	1,177	1,108	1,217	1,143	1,178	1,085
Texas	3,302	1,024	3,354	1,036	3,342	1,008
Utah ^a	422	946	489	1,019	471	889

(Continued)

Table 11.
Section 1619(b) participants and their average earnings, by state or other area, selected months,
2003–2004—Continued

State or area	December 2003		September 2004		December 2004	
	Number	Average earnings (dollars)	Number	Average earnings (dollars)	Number	Average earnings (dollars)
Vermont	351	919	380	973	378	946
Virginia ^a	1,441	1,021	1,560	1,066	1,554	1,043
Washington	1,627	1,117	1,785	1,119	1,721	1,116
West Virginia	454	1,112	509	1,156	525	1,140
Wisconsin	2,360	899	2,393	916	2,351	884
Wyoming	181	812	220	900	222	827
Outlying area						
Northern Mariana Islands	8	1,220	7	1,194	4	1,080

SOURCE: Social Security Administration, Supplemental Security Record (Characteristic Extract Record format), 100 percent data.

a. The Social Security Administration identifies persons as potential participants; final Medicaid determinations are made by the state.

CONTACT: Clark Pickett (410) 965-9016 or ssi.workers@ssa.gov.

Table 12.
Number and average earnings, by selected characteristics, December 2004

Characteristic	Section 1619(a) participants		Section 1619(b) participants	
	Number	Average earnings (dollars)	Number	Average earnings (dollars)
All participants	17,115	1,076	73,681	1,070
Age				
Under 18	112	1,008	148	--
18–21	1,875	1,048	2,867	1,193
22–29	4,537	1,067	17,801	1,120
30–39	4,516	1,081	20,246	1,058
40–49	3,760	1,089	18,175	1,050
50–59	1,832	1,085	9,431	1,062
60–64	362	1,102	2,675	972
65 or older	121	1,062	2,338	905
Sex				
Male	9,374	1,088	38,415	1,089
Female	7,741	1,061	35,266	1,050
Earned income ^a				
Wages	16,589	1,078	71,570	1,077
Self-employment	629	1,017	2,694	953
Earnings (dollars)				
Less than 400	10,030	268
400–499	6,012	435
500–599	7,162	529
600–699	6,591	630
700–899	2,391	860	9,211	775
900–1,199	10,290	1,017	7,177	1,012
1,200 or more	4,434	1,328	27,498	1,862
Unearned income ^a				
None	15,196	1,077	22,714	1,709
Social Security	573	1,031	47,722	728
Other pensions	33	1,077	470	940
Income based on need	2	1,124	22	1,712
Asset income	893	1,101	4,336	989
Other	507	1,045	3,335	1,230
Work incentives ^a				
Plans for achieving self-support ^b	163	1,339	0	0
Impairment-related work expenses	511	1,126	1,583	969
Blind work expenses	4	1,752	581	1,409

SOURCE: Social Security Administration, Supplemental Security Record (Characteristic Extract Record format), 100 percent data.

NOTE: -- = not available; . . . = not applicable.

a. The sum of the entries may be greater than the total because some recipients may receive more than one type of earned or unearned income, or both earned and unearned income, or benefit from more than one work incentive provision.

b. Includes 16 persons with a PASS that excludes only resources.

CONTACT: Clark Pickett (410) 965-9016 or ssi.workers@ssa.gov.

Table 13.
Percentage distribution of participants aged 18–64, by diagnostic group, December 2004

Diagnostic group	All blind and disabled recipients	Section 1619(a) participants	Section 1619(b) participants
Total			
Number	4,017,108	16,882	71,195
Percent	100.0	100.0	100.0
Congenital anomalies	0.6	0.8	0.8
Endocrine, nutritional, and metabolic diseases	3.7	1.8	2.0
Infectious and parasitic diseases	1.7	1.5	1.8
Injuries	2.6	1.8	2.2
Mental disorders			
Retardation	21.9	34.0	31.4
Schizophrenia	9.9	8.6	8.8
Other	25.3	23.4	21.5
Neoplasms	1.1	1.0	1.1
Diseases of the—			
Blood and blood-forming organs	0.4	0.8	0.6
Circulatory system	4.5	1.4	1.7
Digestive system	0.9	0.4	0.6
Genitourinary system	1.0	1.0	1.2
Musculoskeletal system and connective tissue	9.9	3.8	5.2
Nervous system and sense organs ^a	7.8	10.5	10.1
Respiratory system	2.1	1.1	1.0
Skin and subcutaneous tissue	0.2	0.1	0.1
Other	0.2	0.4	0.2
Unknown	6.2	7.6	9.8

SOURCE: Social Security Administration, Supplemental Security Record (Characteristic Extract Record format), 100 percent data.

NOTE: Effective with the December 2002 edition, all recipients in each recipient category are included when computing percentages for each diagnostic category. Previously, only recipients with identified diagnoses were included in this computation.

- a. Most disabled recipients classified as blind are included in this category. A few blind recipients with a primary impairment other than diseases of the eye are coded in other categories. Also, a few recipients are classified with diseases of the eye, but their impairment does not meet the definition of blindness.

CONTACT: Clark Pickett (410) 965-9016 or ssi.workers@ssa.gov.