



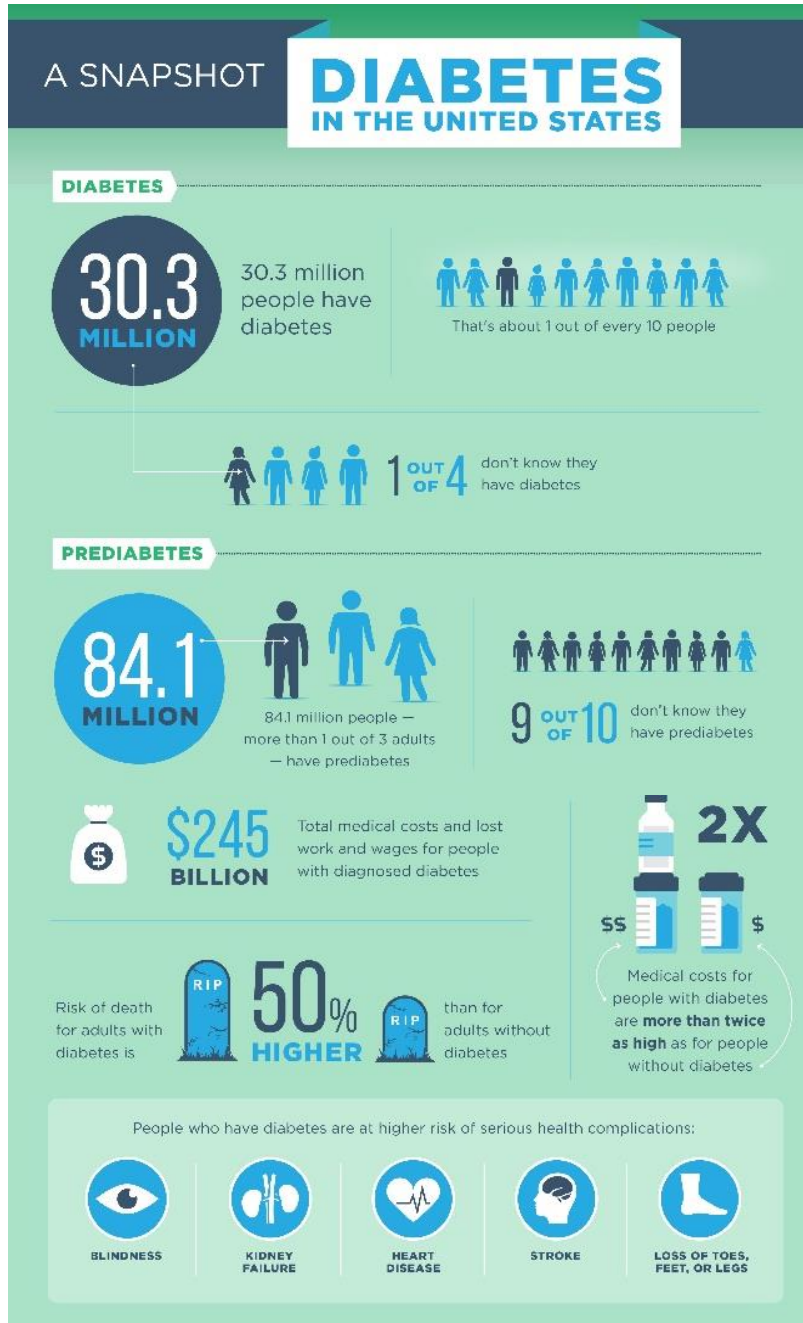
UNIVERSITY *of* MARYLAND
SCHOOL OF MEDICINE

SSA NATIONAL DISABILITY FORUM: DIABETES

Kashif Munir, MD

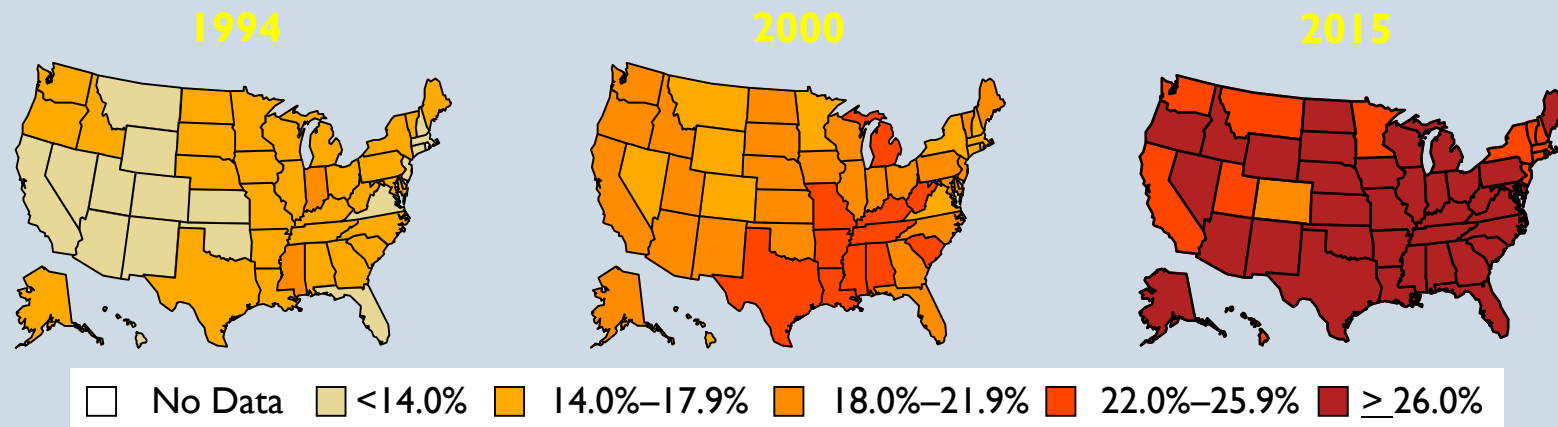
University of Maryland School of Medicine

DIABETES IN THE US

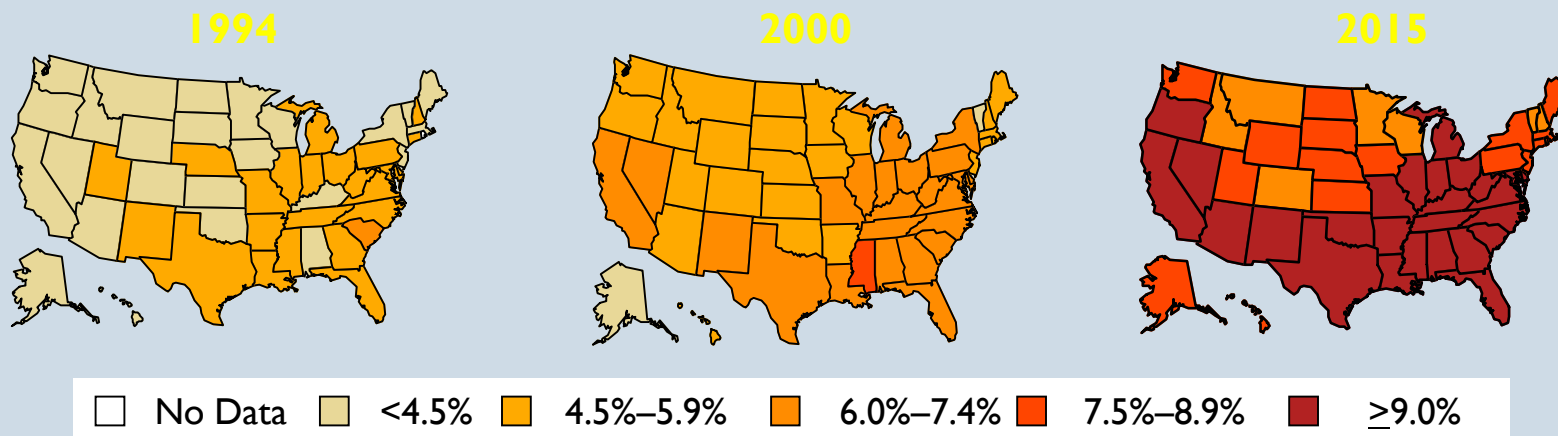


Age-adjusted Prevalence of Obesity and Diagnosed Diabetes Among US Adults

Obesity (BMI ≥ 30 kg/m²)



Diabetes



CDC's Division of Diabetes Translation. United States Surveillance System available at <http://www.cdc.gov/diabetes/data>



DIABETES-RELATED COMPLICATIONS

People with diabetes are at **higher risk** of developing periodontal disease

Diabetic retinopathy affects over **one-third** of all people with diabetes and is the leading cause of vision loss in working-age adults.

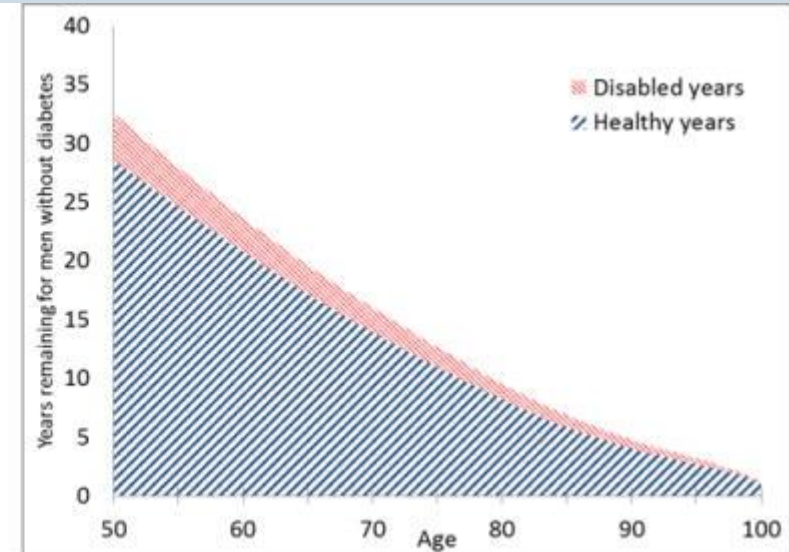
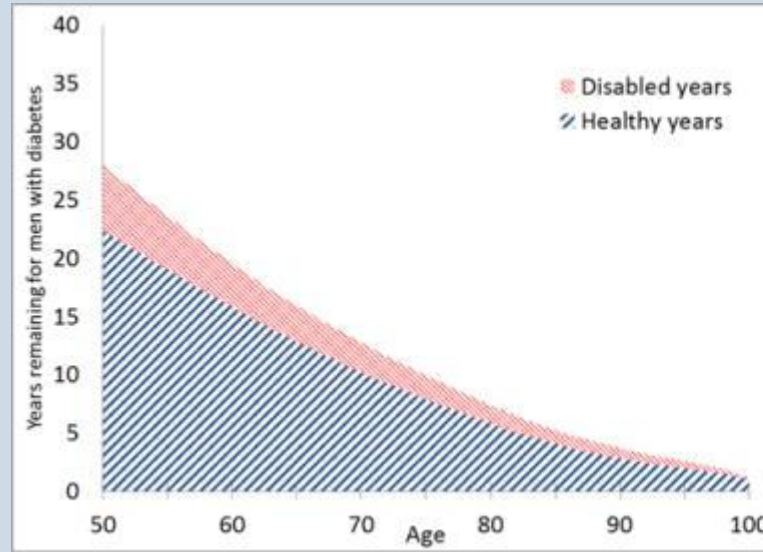
Pregnant woman with diabetes or at high risk for GDM should manage their glycaemia throughout their pregnancy to avoid long-term consequences for themselves and their children, and **transgenerational effects** (higher risk of obesity, diabetes, hypertension and kidney disease in the offspring)

People with diabetes are **2 to 3 times** more likely to have cardiovascular disease (CVD)

The prevalence of end-stage renal disease (ESRD) is up to **10 times higher** in people with diabetes

Every **30 seconds** a lower limb or part of a lower limb is lost to amputation somewhere in the world as a consequence of diabetes

Disability-free and mobility loss disability life years remaining by age for men with and without diabetes



Disability-free and mobility loss disability life years remaining by age for women with and without diabetes

